



**IMMACULATE  
CONCEPTION**  
*UNITED IN FAITH AND TRADITION.  
BUILDING FOR THE FUTURE.*

# REVITALIZATION & BUILDING CAMPAIGN

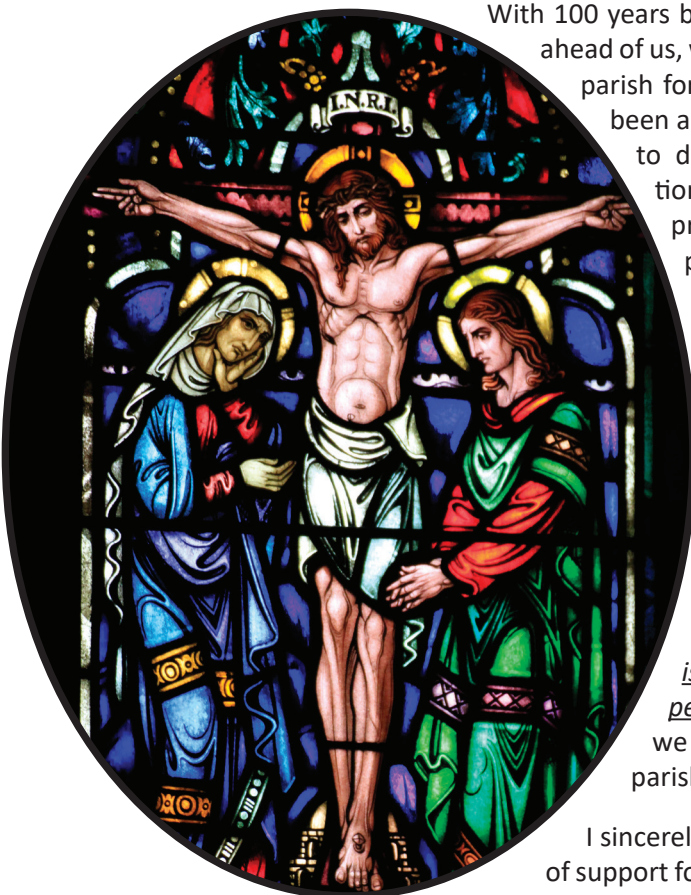
2018

# FROM THE DESK OF THE PASTOR

---

Dear Friends,

Immaculate Conception Parish has been a vital thread in the fabric of the Clintonville community for over a century. Since becoming pastor in 2013, I have been blessed to witness the deep spiritual commitment of the parish families while bringing forth some changes that, I feel, have enhanced our communal and religious growth. The addition of parish ministries and adult faith formation programs has made great strides in opening the hearts and minds of our brothers and sisters in Christ.



With 100 years behind us and, God-willing, another 100+ ahead of us, we are at a crossroads that will impact our parish for years to come. The last few years have been a time of extensive research and reflection to determine the needs and possible solutions best-suited for our parish. A team of professionals, volunteers, staff and I have pored over floorplans, feasibility studies and more to arrive at, what we feel, are the answers to the identified needs. In short, we have a plan.

You have shown your commitment to IC time and again with your loyalty and financial support. At this time, I am asking you to make an even greater commitment to our parish – with a gift to this revitalization and building campaign. *The proposed project is not just about buildings but, rather, the people of IC.* By meeting parishioner needs, we will continue to grow and prosper as a parish family and, thus, better serve the Lord.

I sincerely appreciate your prayerful consideration of support for this effort and the future of IC. May God bless you today and forevermore.

In Christ,

*Dr. Matt*



# IC THROUGH THE YEARS

On December 8, 1915, the Feast of the Immaculate Conception, Immaculate Conception Parish was established by the Right Reverend James J. Hartley, D.D., Bishop of the Diocese of Columbus, at which time Reverend CJ Norris was appointed as the founding pastor. Exactly one year later, Bishop Hartley dedicated a new chapel erected on one of three lots on East North Broadway in Clintonville purchased with a \$5,000 loan.

For over 100 years, the Immaculate Conception community has continued to flourish and grow! Some notable moments of our parish history include:

- In 1922, a private residence was established as a convent for the Sisters of St. Francis of Joliet, IL who began our parish school under the guidance of Rev. John J. Murphy. In its first year, IC School served 90 students.
- In 1923, Rev. John J. Fagan was appointed to lead the thriving parish and school.
- On June 25, 1939, the current church was blessed and dedicated.
- Upon Msgr. Fagan's passing in August 1960, Rev. Richard Crosser was named his successor. One of Fr. Crosser's first projects was the erection of our Marian Grotto created from stones from every state in the union and several nations around the world, including the Holy Land. The grotto was dedicated on December 8, 1961.
- Two additional pastors served the parish between 1970 and 1991, then Reverend Monsignor Anthony Missimi was tapped to lead IC. Under his guidance, the parish undertook major renovations of the parish buildings, school and infrastructure. Most notable was the construction of Marian Hall and connecting Gathering Space to join the church and school buildings.
- In 2008, after 17 years of faithful stewardship, Msgr. Missimi retired and Reverend Monsignor Stephan Moloney was named the newest pastor. He was transferred to St. Andrew's Parish in Upper Arlington in 2013 and Reverend Matthew Hoover became IC's ninth pastor.



## THE JOURNEY

Since our inception over 100 years ago, Immaculate Conception Parish has been a Clintonville landmark, serving families in the surrounding neighborhood and throughout the Diocese of Columbus. The vibrancy of the parish – which has not wavered since its founding – has required us to be vigilant of future needs across the campus so that we may continue to transform lives through an encounter with Jesus Christ.

We arrived at where we are today thanks to the efforts of your fellow parishioners, volunteers, planning professionals and the parish staff. This process began in 2012, nearly 10 years after the addition of Marian Hall to the campus, when Pastor Msgr. Stephan Moloney announced that the church was in need of major repairs. At that time, he formed a feasibility committee to investigate options for financing the maintenance. Upon his transfer to a neighboring parish in 2013, Bishop Campbell named Fr. Matthew Hoover as pastor of Immaculate Conception, who proceeded to further engage the members of the committee, add new members, expand their mission and change the team's name to the Strategic Planning Committee. The newly-enhanced committee brought to the table expertise in facilities, real estate, planning, finance, management and architecture and included major stakeholders of the parish, including the school, staff, church leadership and various ministries.



In early 2014, a parish maintenance committee and the Diocesan Superintendent of Buildings assessed the existing grounds and structures of the IC campus and developed an initial list of maintenance projects. Armed with this information, and motivated by the parish's centennial anniversary in less than two years, the Strategic Planning Committee once again assessed the parish and school needs. Drawing on the results of a survey and personal interviews with over 300 parishioners, the committee set out to determine how the existing facilities could be adapted and changed to serve the IC community for another 100 years.



By December 2015, the Strategic Planning Committee had identified four areas of focus for the parish: exterior and interior church maintenance and beautification; expanded parish administrative offices and meeting spaces; a new, professional kitchen for both parish and school use; and additional meeting and education space.

Shortly after sharing these needs with the parish, a team of engineers, architects and other space planning professionals were engaged to determine the feasibility of these projects. The result was a conceptual master plan for the 6.5-acre campus. This newly-revised plan was shared with parishioners in June 2016, at which time we set out to complete a Funding Feasibility Study to determine and evaluate the potential of a major, comprehensive campaign and assess parishioner concerns and feedback. A large cross-section of the parish – parishioners from ages 32 to 95, some school families, and some PSR families, some whose children have graduated and gone out on their own – indicated overwhelming support for a large capital campaign to complete the necessary maintenance items and enhance the parish campus.

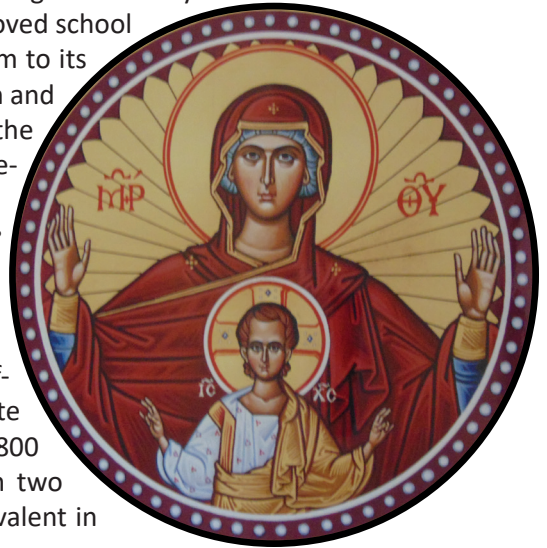


# OUR NEEDS ARE GENUINE!

Today we are at a crossroads. Our needs as a vibrant and growing parish have been studied exhaustively and, in order to meet the evolving wants of parishioners, while continuing to be good stewards of our existing facilities, we need to act sooner rather than later. Our responsibility to Immaculate Conception's future depends on our ability to meet the needs established by the Strategic Planning Committee.

The proposed updates, modifications and additions to the parish campus are as follows:

- **Renovate/Restore the Church** – Complete the necessary structural repairs to the church to ensure it remains a safe and fully-functioning worship space; add decorative interior painting designed to enhance the worship experience and transform the church to its original splendor.
- **Professional Parish/School Kitchen and Cafeteria** – An 8,500 square-foot addition will house a new parish production kitchen and cafeteria, providing connectivity to Marian Hall for large-scale parish gatherings, improved school lunch service and returning the original gymnasium to its intended purpose. With the addition of the kitchen and cafeteria, the current kitchen and restrooms on the lower level of the school will be renovated and repurposed for student and teacher needs.
- **Parish Administrative Offices and Meeting Space** – In order to house the growing number of necessary parish staff members, as well as provide a more easily-accessible entry to the parish offices, an addition and remodel of the existing parish office is proposed. The new addition would relocate the main entrance and provide approximately 5,800 square feet of new office and meeting space on two floors, including a mid-sized gathering space equivalent in size to Room A on the lower level of the rectory.
- **Education Center Addition/Relocation of Adoration Chapel Entrance** – Even with a proposed addition to the school and parish administrative offices, additional multi-purpose space for parish ministry and/or community meetings still is sorely needed. An 8,500 square-foot addition to the Parish Education Center (former convent) is proposed to provide updated spaces for PSR (religious education), Before and After School Care, the Sunday Wee Care Nursery, Sunday Pre-school, Vacation Bible School and, equally important, direct and ADA accessibility to the Adoration Chapel and dedicated restrooms.



# CHURCH RESTORATION

Our church is the cornerstone of Immaculate Conception Parish. Our place of worship is of primary importance to our community, so it is only fitting that the capital improvements to our campus begin with our church building.

With the exterior structure now restored, the interior worship space now must be addressed. Repairing and painting the the wall and ceiling areas damaged by water penetration is paramount; however, while the church is closed for these repairs, we also will undertake additional beautification work to invoke the church's rich history and original design, including the return of the tabernacle of the Blessed Sacrament to the sanctuary, the creation of a dedicated shrine to the Immaculate Conception, restoration of the side chapels on the east and west sides of the church, enhancement of the Stations of the Cross and other, various, cosmetic upgrades.

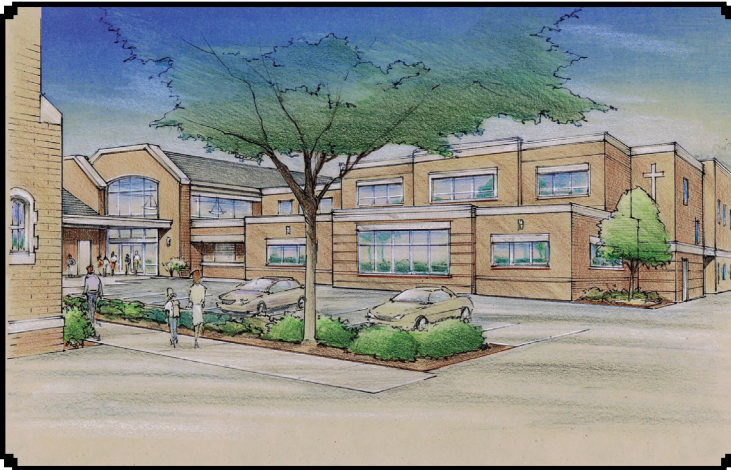


*Proposed Shrine  
of the Immaculate  
Conception*



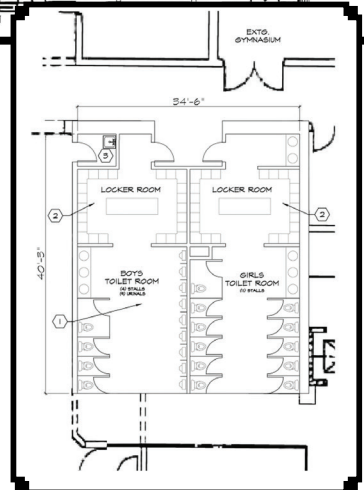
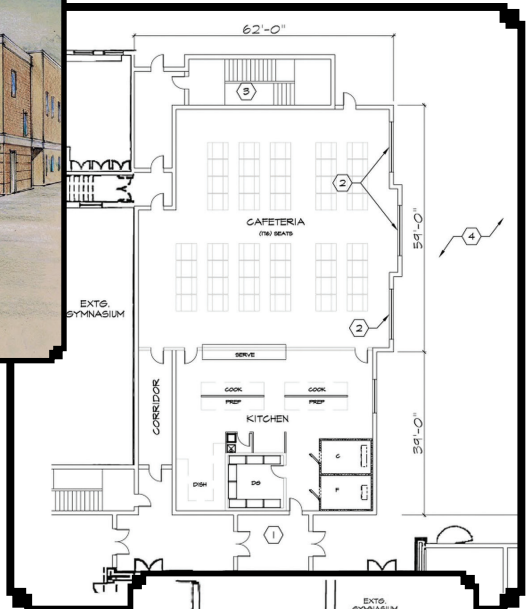
# PROFESSIONAL KITCHEN & CAFETERIA

Our parish/school kitchen has been in need of renovation for more than a decade and, in recent years, we have modified various areas in the 90+-year-old school building to construct flexible learning spaces to meet students' individual needs. This has resulted in the use of the gymnasium as a cafeteria, stairwells as intervention spaces, and the stage as a music room, among other modifications. Furthermore, at times, the need for additional classroom space has resulted in the use of Marian Hall for class time which otherwise would be utilized for day-to-day parish functions and meetings.



To address this challenge, the addition of an 8,500 square-foot parish/school professional kitchen and cafeteria is proposed. The new kitchen will serve the new cafeteria space, as well as provide access and connectivity to Marian Hall for parish-wide events, such as the Lenten Fish Fry, Parish Festival, spaghetti dinner, pancake breakfast and other large gatherings. A new, dedicated cafeteria will allow for improved lunch service, while freeing the gymnasium for physical education, sporting events or other classes and a space for recess on inclement weather days.

As part of this proposed addition, the existing school kitchen will be remodeled to create new restroom and locker room space for the school and athletic groups utilizing the gymnasium. Furthermore, the existing lower level restrooms will be remodeled to create a dedicated teacher lounge, and the possibility of four, future classrooms could be placed on the second story of the kitchen/cafeteria addition.



# PARISH ADMINISTRATIVE OFFICES

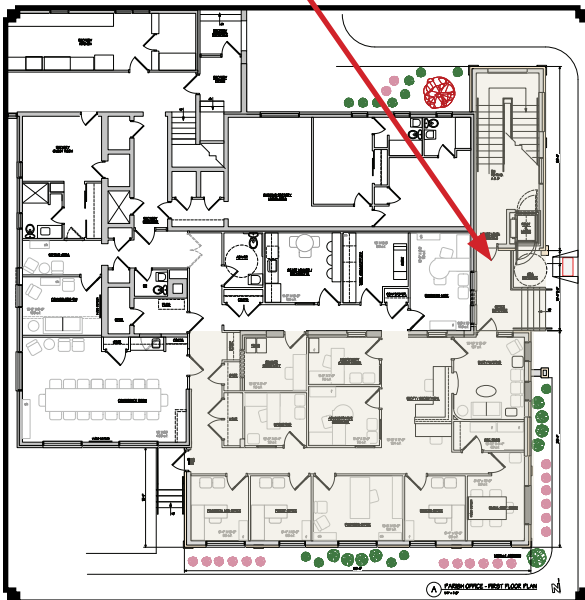
As our parish grows so, too, does the need for new staff members to help cultivate and administer to our parish programs and ministries. Increased office and small meeting spaces are needed to provide an adequate environment for individual and group work and private conferences.

To address these needs, a renovation of and addition to the current administrative office building has been proposed. The changes will:

- add a clearly-marked, direct and ADA accessible entrance to the street-level administrative offices and lower-level group meeting spaces;
- provide more conference, counseling and office space for priests, deacons, development and youth and music ministries on the main floor; and
- increase public meeting space for small- to medium-sized groups with the addition of another room on the lower level, approximately the same size as current “Room A.”

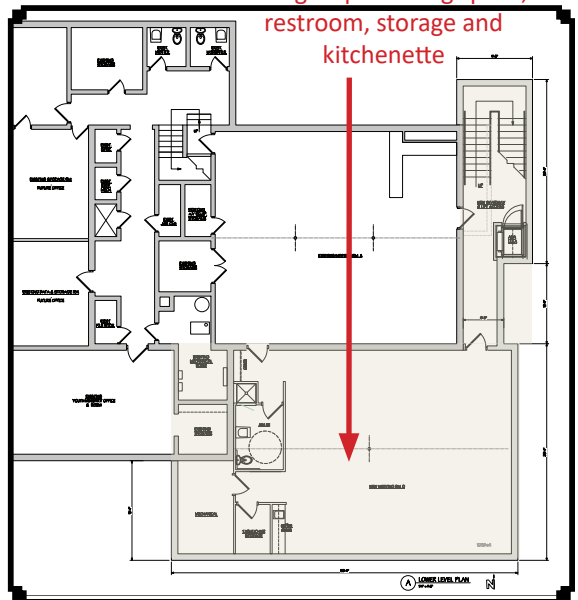


New, ADA-accessible Parish Office entrance



Proposed Main Level (new construction is shaded)

New group meeting space, restroom, storage and kitchenette



Proposed Lower Level



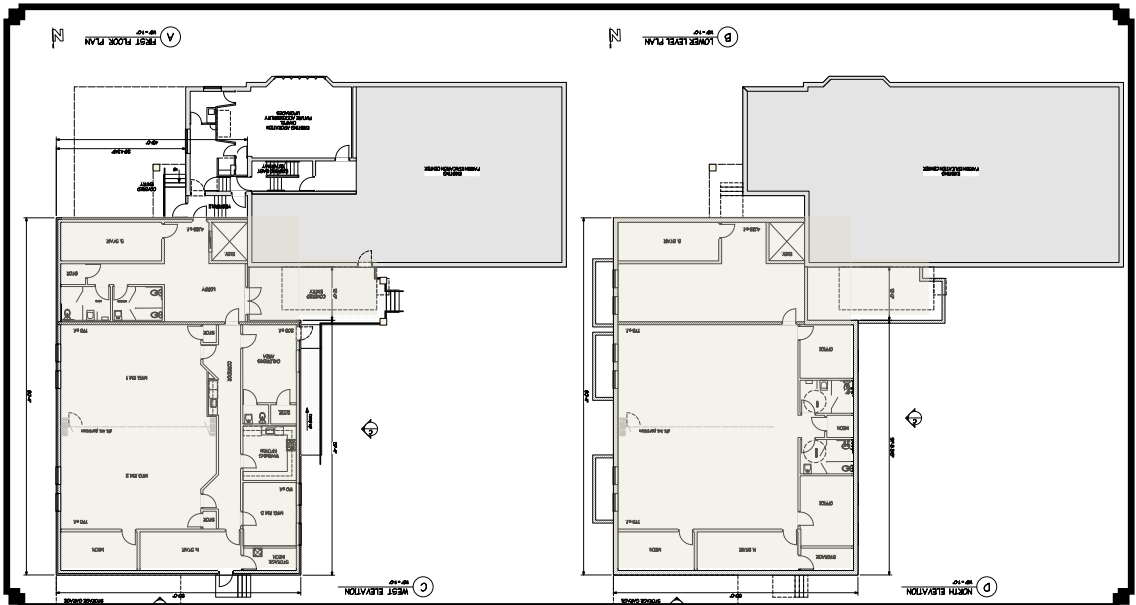
# PARISH EDUCATION CENTER

It's often been said that strength and growth come only through continuous effort and struggle. This is especially true as we add new programs and ministries to meet the changing needs and demographics of our parish family. Our campus already struggles with space constraints for hosting ministry and/or community meetings, while additional programs place an even greater strain on the campus facilities.

To address this need, an addition on the northeast end of the existing Parish Education Center (the former convent) is proposed. The addition will provide:

- direct access to the Adoration Chapel and the existing building;
- a separate, covered entry with ADA accessibility;
- two floors of customizable space for small or large group events; and
- dedicated restrooms.

*View from new alley parking*



*Proposed Addition (new construction is shaded)*

# ESTIMATED PROJECT COSTS

The future of Immaculate Conception Parish is bright and our “Building for the Future” campaign reflects this brilliance. The cost of these projects is substantial but provides for continued parish growth in ministry and mission.

The **estimated\*** cost, including the required diocesan assessment, soft costs, architect fees, etc., associated with each of the projects outlined in this brochure is as follows:

Project	Projected Cost for Completion
Exterior Church Restoration	\$400,000
Interior Church Restoration and Beautification	\$675,000
Production Kitchen/Cafeteria Addition & Existing School Space Updates	\$4.75MM
Parish Administrative Office Addition & Renovations	\$1.06MM
Parish Education Center Addition	\$1.51MM
Total Projected Cost	\$8.4MM

*\*Based on initial estimates from architects and contractors.*

*United in Faith and Tradition.*

*Building for the Future.*



# GIVING FROM THE HEART

---

The support of the Immaculate Conception community has sustained our parish for over a century, and the impact we make on hearts and souls from this point forward will be determined by you. Your prayerful consideration to Father Hoover's request for a financial commitment to our **United in Faith and Tradition. Building for the Future.** campaign is critical to our continued growth, progress and vitality. We trust that every parishioner will participate at a level that reflects their belief and commitment to Immaculate Conception and our work in transforming lives through an encounter with Jesus Christ.

For this effort to be successful, it will require a sacrifice by each member of the IC family -- a commitment that is above and beyond your current financial support of our parish. We recognize that not everyone can make the same-sized gift, but everyone CAN make the same-sized sacrifice. Furthermore, all gifts are payable up to three years.

- **Tax Deductions** - Under current IRS regulations, all contributions are tax deductible up to the fullest extent allowed by law.
- **Electronic Fund Transfers** - The parish encourages the use of Electronic Fund Transfers (EFT) for the fulfillment of your pledge. Please see the Letter of Intent for payment options.
- **Payment Reminders** - Payment reminders are an alternative that can be used to fulfill your pledge. Please see the Letter of Intent for information on monthly, quarterly, semi-annual or annual billing options.
- **Appreciated Securities** - Depending on individual situations, there may be significant tax advantages to contributing appreciated securities or other assets. Please contact the parish development office to further discuss this method of giving.



For additional information on giving opportunities, please contact the parish office and ask to speak with Finance Secretary John Bernard or Development and Marketing Director Theresa Vivona.



IMMACULATE  
CONCEPTION

---

414 E. NORTH BROADWAY  
COLUMBUS, OH 43214  
614.267.9241  
[www.iccols.org](http://www.iccols.org)