



I SEE
faith



IMMACULATE CONCEPTION CATHOLIC PARISH
SOLUTIONS TO MEET ESTABLISHED
NEEDS — PHASE 2
JUNE 2016

Step two in the strategic
planning process:
The next 100 years

I.C. STRATEGIC PLANNING COMMITTEE

Fr. Matthew Hoover, Pastor

Laurie Johnson, Business Manager

Christine Demko, Committee member and parishioner

Barb Fortkamp, Committee member and parishioner

Cindy Colucy, Committee member and parishioner

Kevin Kobbeman, Committee member and parishioner

John Fields, Committee member and parishioner

Colleen Kent, Committee member

Bob Poirier, Committee member and parishioner

Consultants:

Jason Janoski, Marketing professional and parishioner

Sarah Moore, Development professional

Tracy Healy, Space assessment professional

Jenny Leshnock, Engineer professional

John Eberts, Architect and parishioner

Michael Healy, PH7 Architects

STRATEGIC PLANNING TIMELINE

ONE

Facility Needs Assessment: led by parishioners, survey and assess the long-term needs and growth of the parish.

PHASE ONE:
3-5 MONTHS

PHASE TWO:
2-3 MONTHS

PHASE THREE:
5-6 MONTHS

PHASE FOUR:
12-14 MONTHS

THREE

Funding Feasibility Study: determine and evaluate the potential of a major comprehensive campaign. Assess concerns and feedback from parishioners.

TWO

Provide Solutions to Meet Established Need: professionals study space and facilities to develop an action plan (engineers, architects, etc.).

FOUR

Capital Campaign: comprehensive process that consists of several phases:

1. **Create Campaign Planning Committee:** choose parishioners to lead endeavor
2. **Leadership Gift Phase:** largest gifts
3. **Major Gift Phase:** major gifts
4. **Kick-Off to Parish:** celebrate half-way mark to goal with a parish event
5. **Parish-wide Campaign:** engage with and involve the whole parish in campaign
6. **Conclusion and Pledge Collection:** formal end to the campaign within a year of its start

3-15

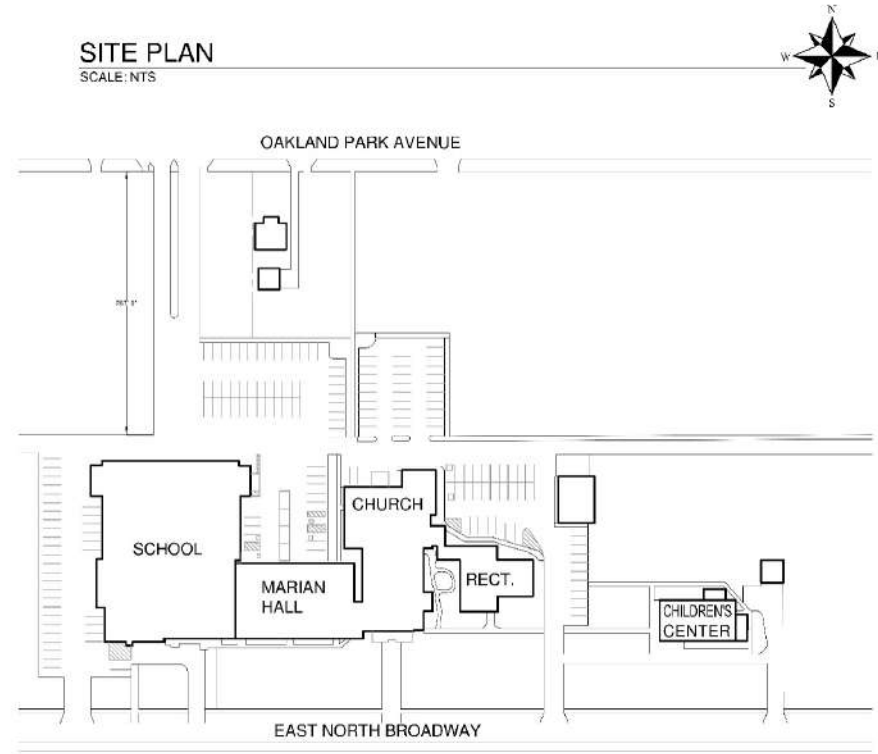
12-15

PARISH FOCUS AREAS

- * **Church**
- * **Parish Kitchen**
- * **Meeting Space for Parish**
- * **Parish Administration Space**
- * **Parish School Needs**

CURRENT CAMPUS

- Our campus consists of 6.5 acres
- 8 Buildings
- 181 Parking spaces
- 6 Entrances
 - 3 North Broadway
 - 1 Oakland Park
 - 2 Allies

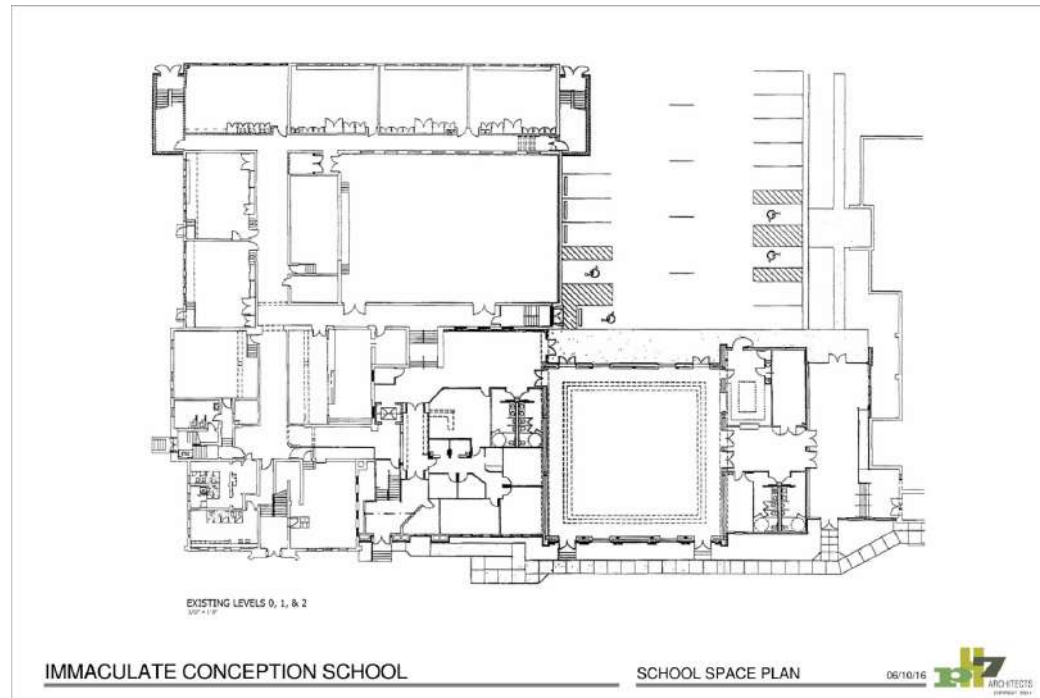


RECOMMENDATION: CHURCH RESTORATION

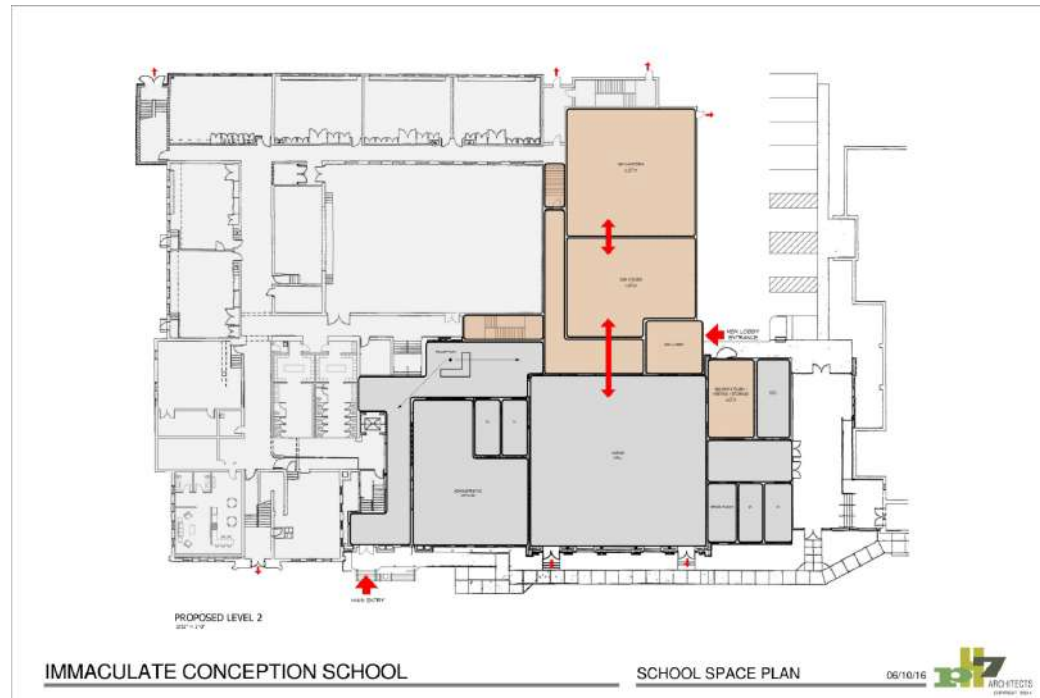


SCHOOL FLOOR PLAN - EXISTING

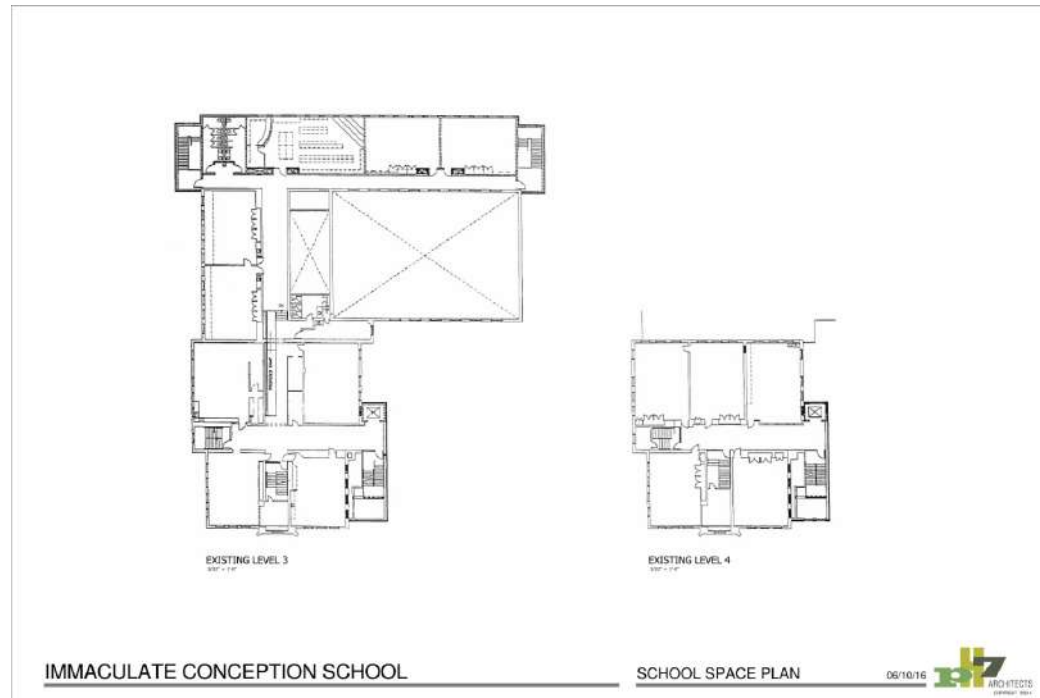
1ST FLOOR



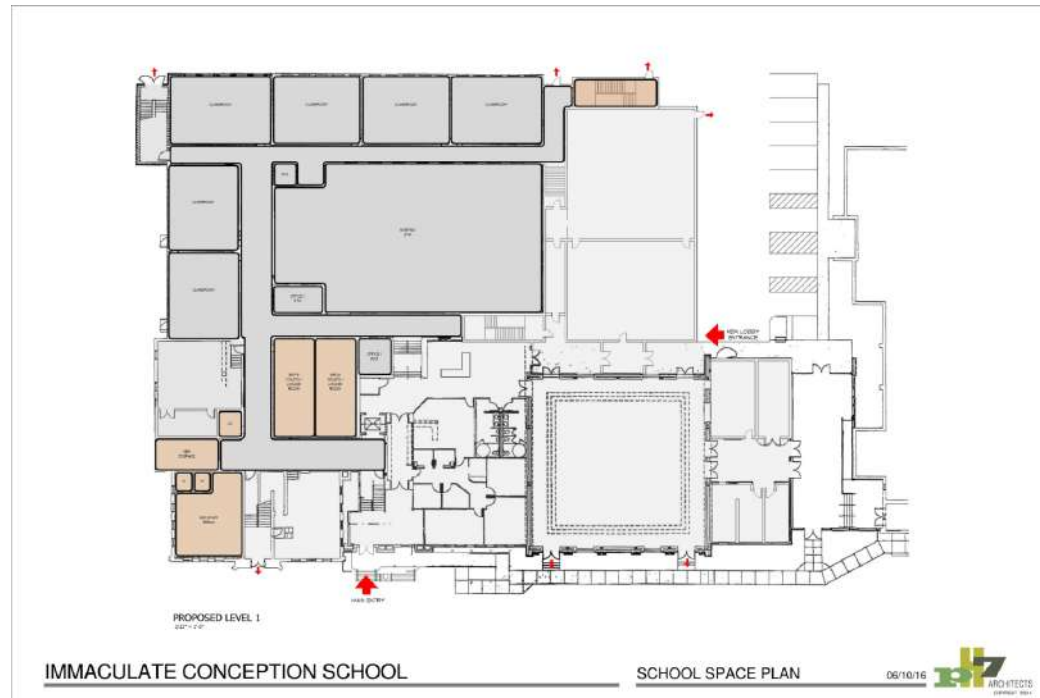
RECOMMENDATION: NEW SCHOOL/PARISH KITCHEN AND CAFETERIA 1ST FLOOR (FUTURE)



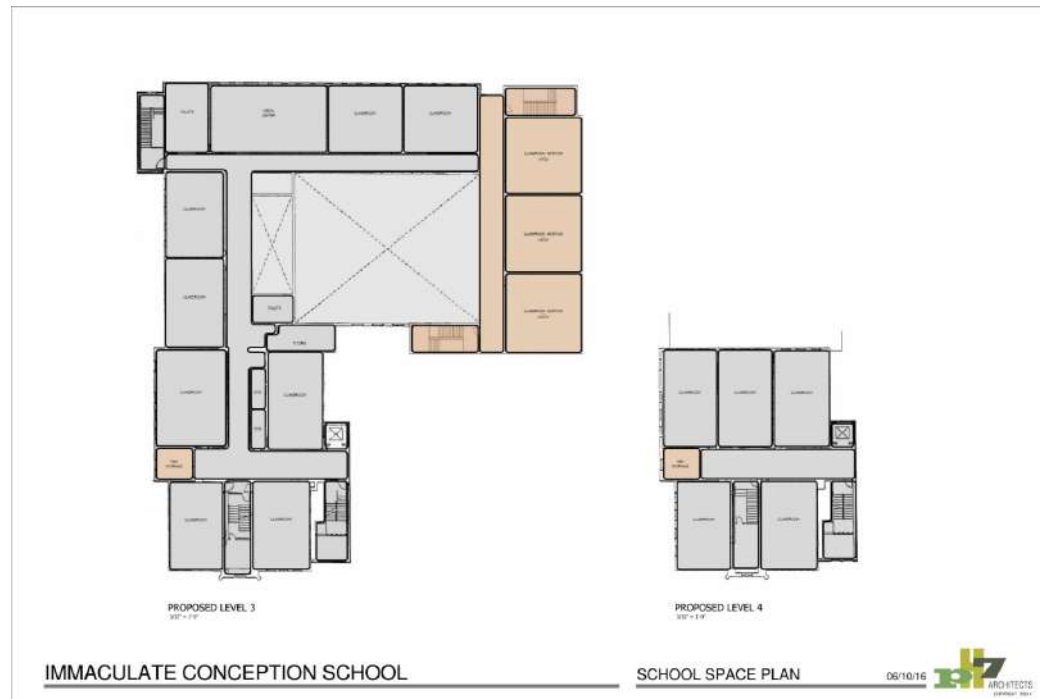
SCHOOL FLOOR PLAN - EXISTING BASEMENT



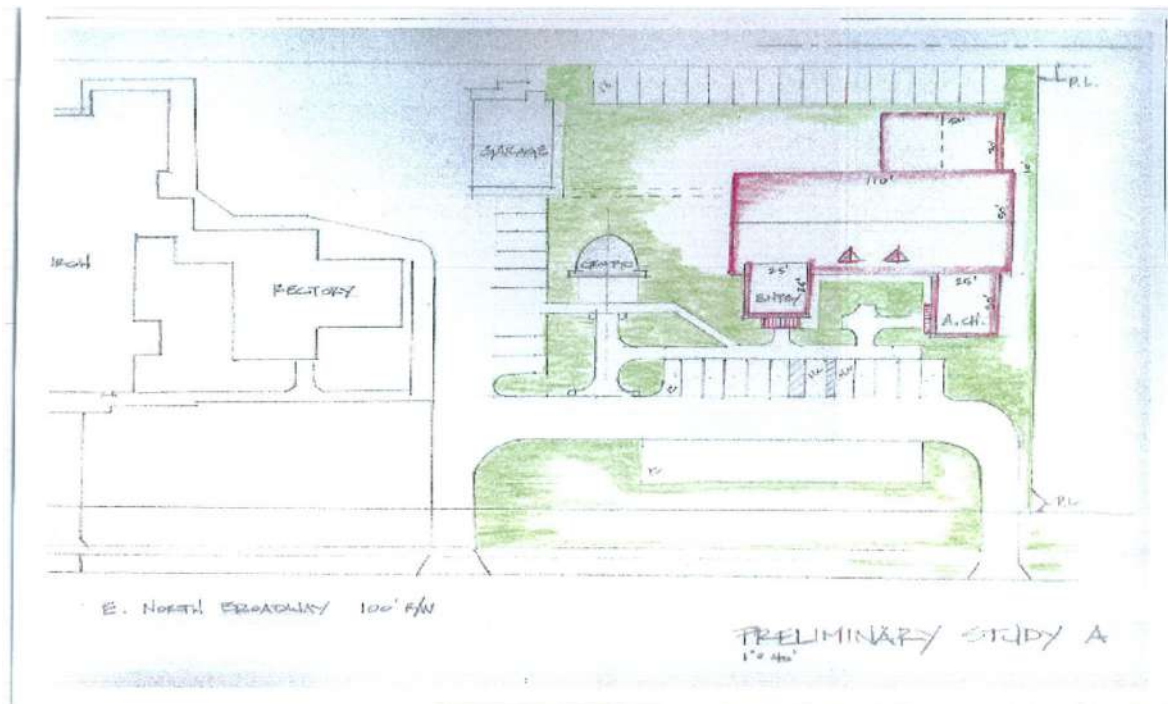
RECOMMENDATION: SCHOOL NEEDS - LOCKER ROOMS, RESTROOMS, TEACHERS LOUNGE BASEMENT FLOOR (FUTURE)



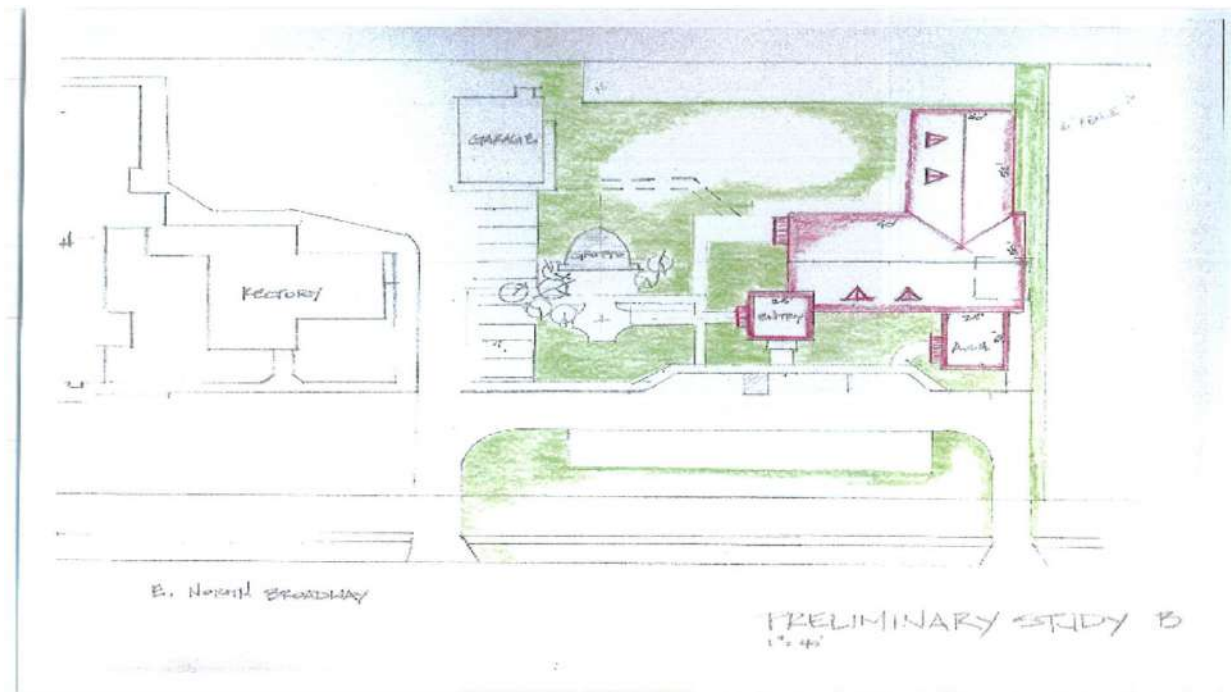
RECOMMENDATION: SCHOOL NEEDS - ADDITIONAL SCHOOL CLASSROOMS 2ND FLOOR (FUTURE)



**RECOMMENDATION:
RECONFIGURE CHILDREN'S CENTER TO THE PARISH
ADMINISTRATION OFFICES & MEETING SPACE (OPTION A)**



**RECOMMENDATION:
RECONFIGURE CHILDREN'S CENTER TO THE PARISH
ADMINISTRATION OFFICES & MEETING SPACE (OPTION B)**



**RECOMMENDATION:
RETURN RECTORY TO ITS ORIGINAL PURPOSE AS A
RECTORY**



QUESTIONS AND ANSWERS

What are we doing with Marian Hall?

Where will the new kitchen be located and what will it be used for?

What about an addition to the school (classrooms, bathroom/locker room, storage)?

What about playground and parking space?

What about a preschool?

What is the status on the roof?

How will the Children's Center be used?

How will the Oakland Park property be used? Will Fr. Hoover live there?

When will there be a capital campaign?

THANK YOU!