



IMMACULATE  
CONCEPTION

# STRATEGIC PLANNING PRESENTATION

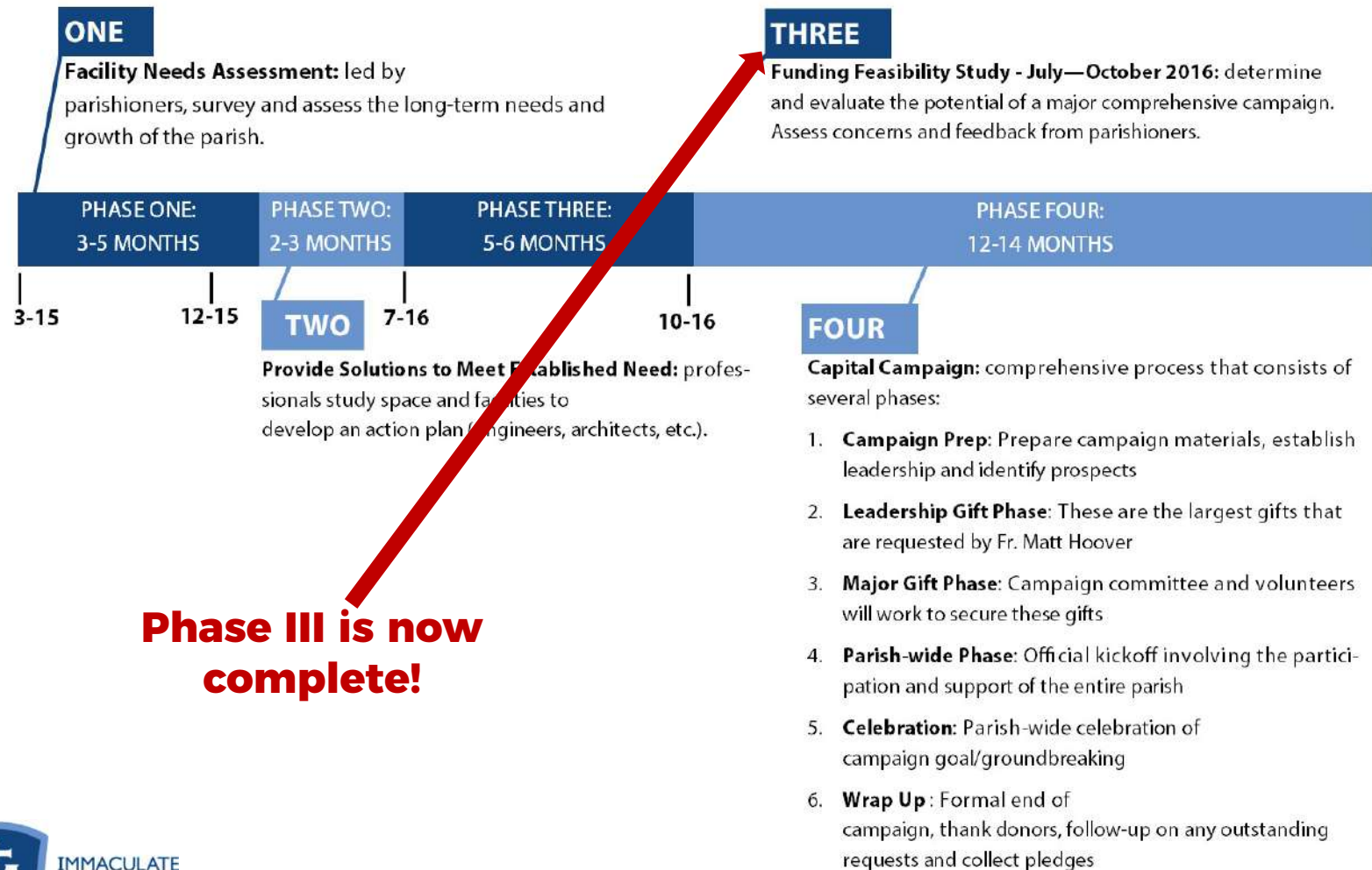
Sunday, May 21, 2017

1 p.m.

Marian Hall

# STRATEGIC PLANNING TIMELINE

## STRATEGIC PLANNING TIMELINE



# PARISH-WIDE FACILITY NEEDS

The following building needs were prioritized in order of importance to parishioners:

- Church — exterior and interior restoration work
- Parish/School Production Kitchen and Cafeteria
- Parish Education Center (former convent)
- Parish Administrative Offices and Additional Meeting Rooms

# PARISH-WIDE FACILITY NEEDS

Parish Administrative Office  
Addition/Renovation



Parish/School Production Kitchen and Cafeteria Addition

Parish Education Center Addition

Church Restoration Work



# CHURCH RESTORATION WORK

Church restoration will commence in Summer 2017

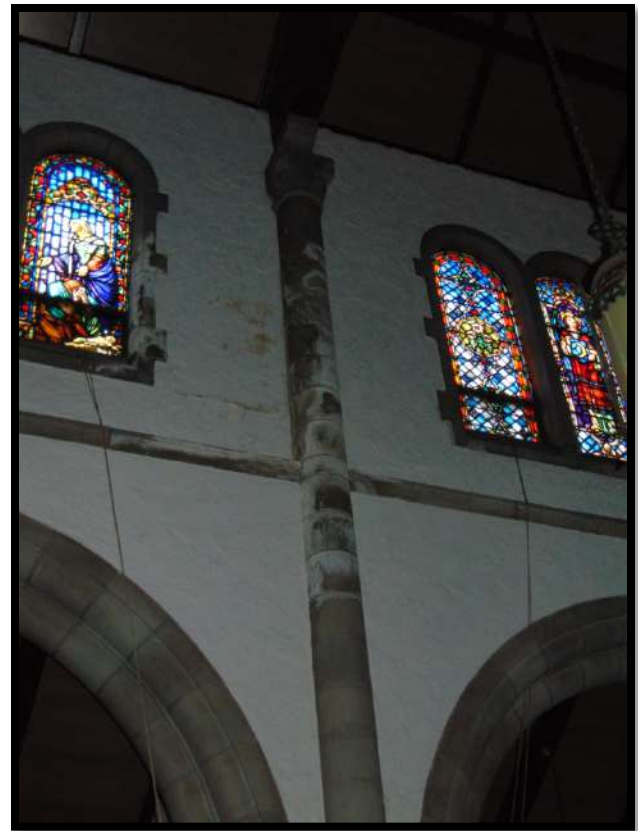
- Exterior structural issues will be addressed first, including brickwork, tuck pointing, stonework and gutters



# CHURCH RESTORATION WORK

Interior restoration will commence upon completion of the exterior work

- Interior work will include repair and painting of water damaged areas on the ceiling and walls



# PARISH/SCHOOL PRODUCTION KITCHEN & CAFETERIA

Planned changes include:

- Construction of an 8,500 square-foot addition outside of the current gym
- Coinciding with this addition, existing plans call for conversion of the existing kitchen on the lower level of the school to boys and girls restrooms and locker rooms
- Conversion of the existing lower level restrooms to a dedicated teachers' lounge
- Addition of a portico and roof to cover the existing ramp for a consistent look from E. North Broadway



# PARISH/SCHOOL PRODUCTION KITCHEN & CAFETERIA



IMMACULATE CONCEPTION PARISH

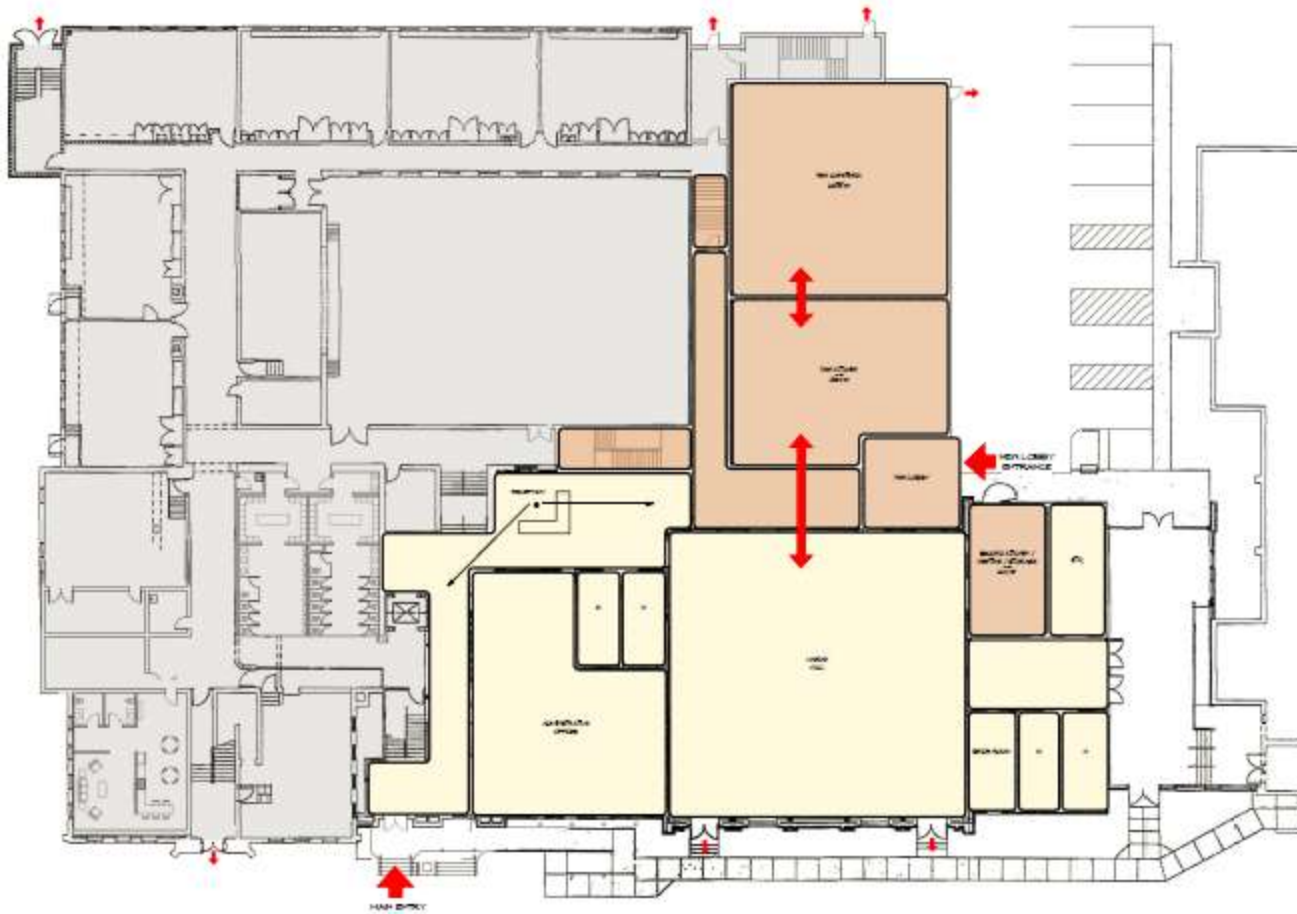
School Cafeteria/Classroom Addition



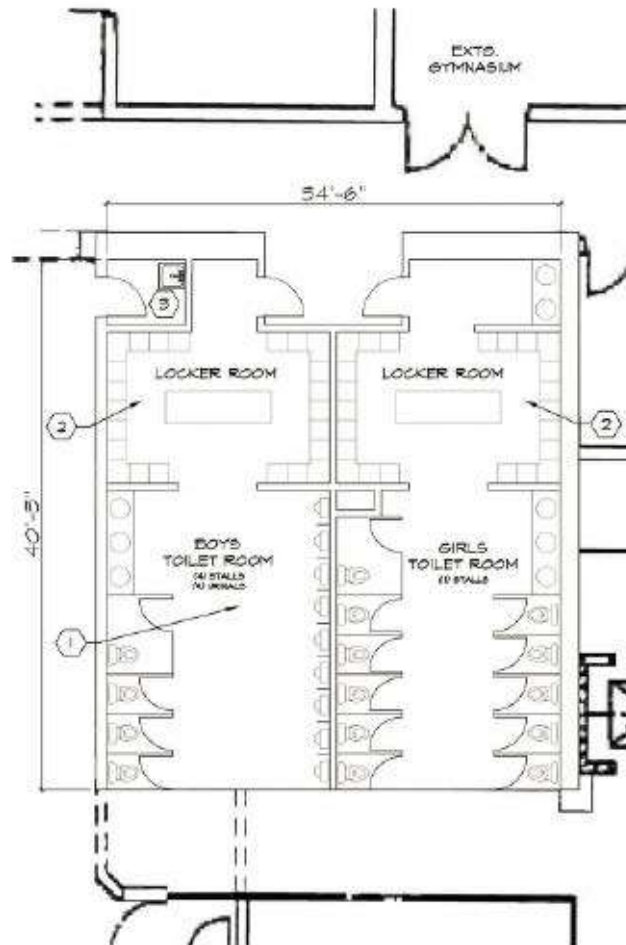
IMMACULATE  
CONCEPTION



# PARISH/SCHOOL PRODUCTION KITCHEN & CAFETERIA

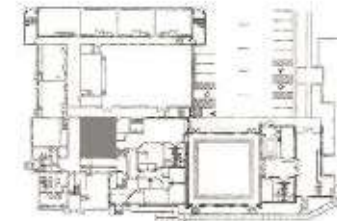


# CONVERSION OF EXISTING KITCHEN TO BOYS/GIRLS RESTROOMS & LOCKER ROOMS



## FLOOR PLAN CODED NOTES: (K)

1. CONVERSION OF CURRENT KITCHEN, DRY GOODS & CUSTODIAL STORAGE INTO BOYS AND GIRLS TOILETS AND LOCKER ROOM.
2. (58) 1/2 HEIGHT LOCKERS IN EACH ROOM.
3. NEW JANITOR'S CLOSET/MOP SINK.



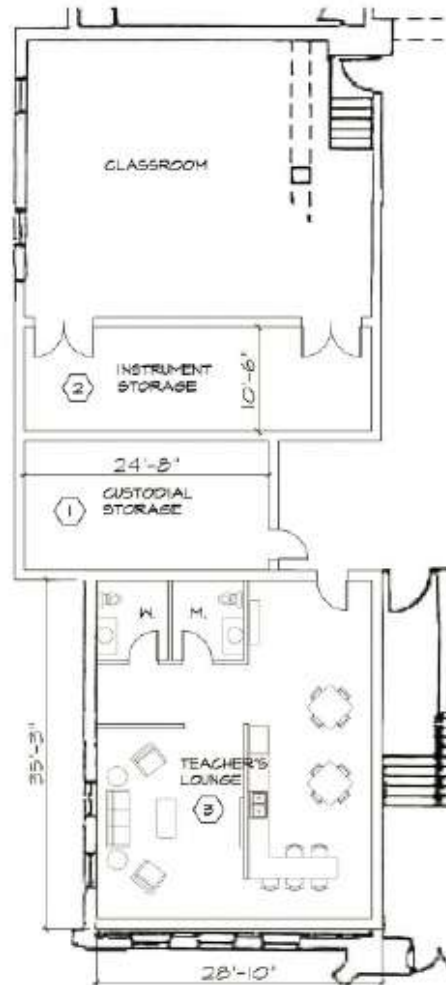
KEY PLAN

SCALE:  
1/8" = 1'-0"



IMMACULATE  
CONCEPTION

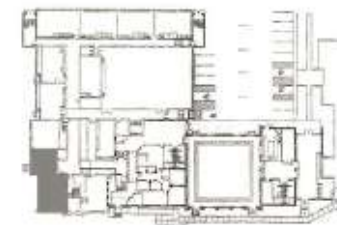
# CONVERSION OF EXISTING LOWER LEVEL RESTROOMS TO DEDICATED TEACHERS' LOUNGE



## FLOOR PLAN CODED NOTES. (1)

1. RELOCATED CUSTODIAL STORAGE SPACE PREVIOUSLY OCCUPIED BY SW STAIRWELL. NO LONGER REQ'D.
2. CAPTURED SPACE DUE TO TOILET ROOM RELOCATION.
3. NEW TEACHER'S LOUNGE IN SPACE PREVIOUSLY USED FOR BOYS/GIRLS TOILETS.

SCALE:  
3/32" = 1'-0"



KEY PLAN



IMMACULATE  
CONCEPTION

# ADDITION OF PORTICO AND ROOF AT ACCESSIBLE ENTRANCE ON E. NORTH BROADWAY



IMMACULATE CONCEPTION SCHOOL



IMMACULATE  
CONCEPTION

# PARISH ADMINISTRATIVE OFFICES

Also related to our parish growth is the addition of new staff members, resulting in the need for additional office space. A renovation of and addition to the current administrative office building will:

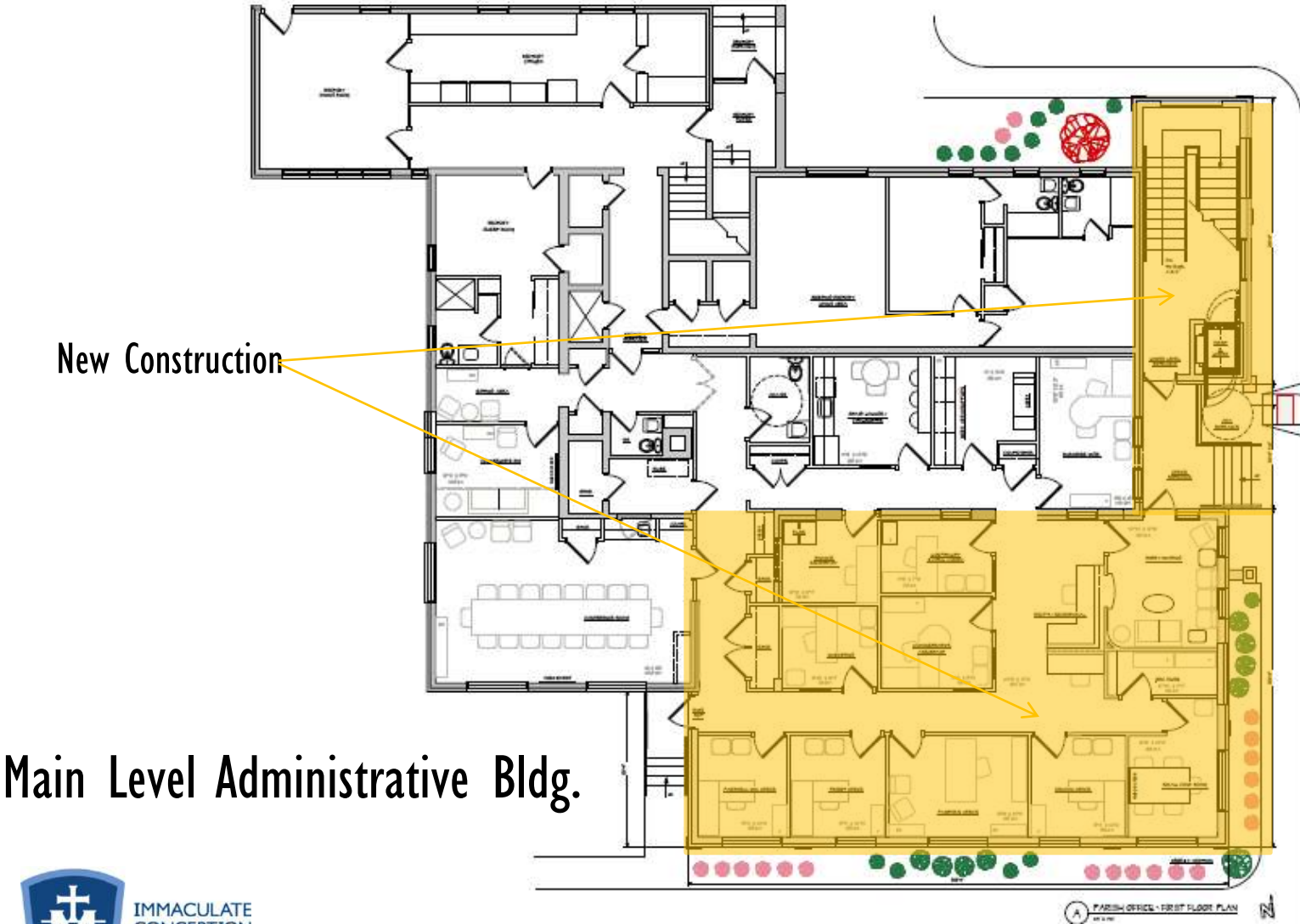
- Provide a clearly-marked, direct and ADA accessible entrance to the administrative offices and meeting spaces in the basement
- Add more conference, counseling and office space on the main floor
- Increase public meeting space for small- to medium-sized groups with the addition of another room in the basement, approximately the same size as current “Room A.”

# PARISH ADMINISTRATIVE OFFICES



East View (from Grotto)

# PARISH ADMINISTRATIVE OFFICES



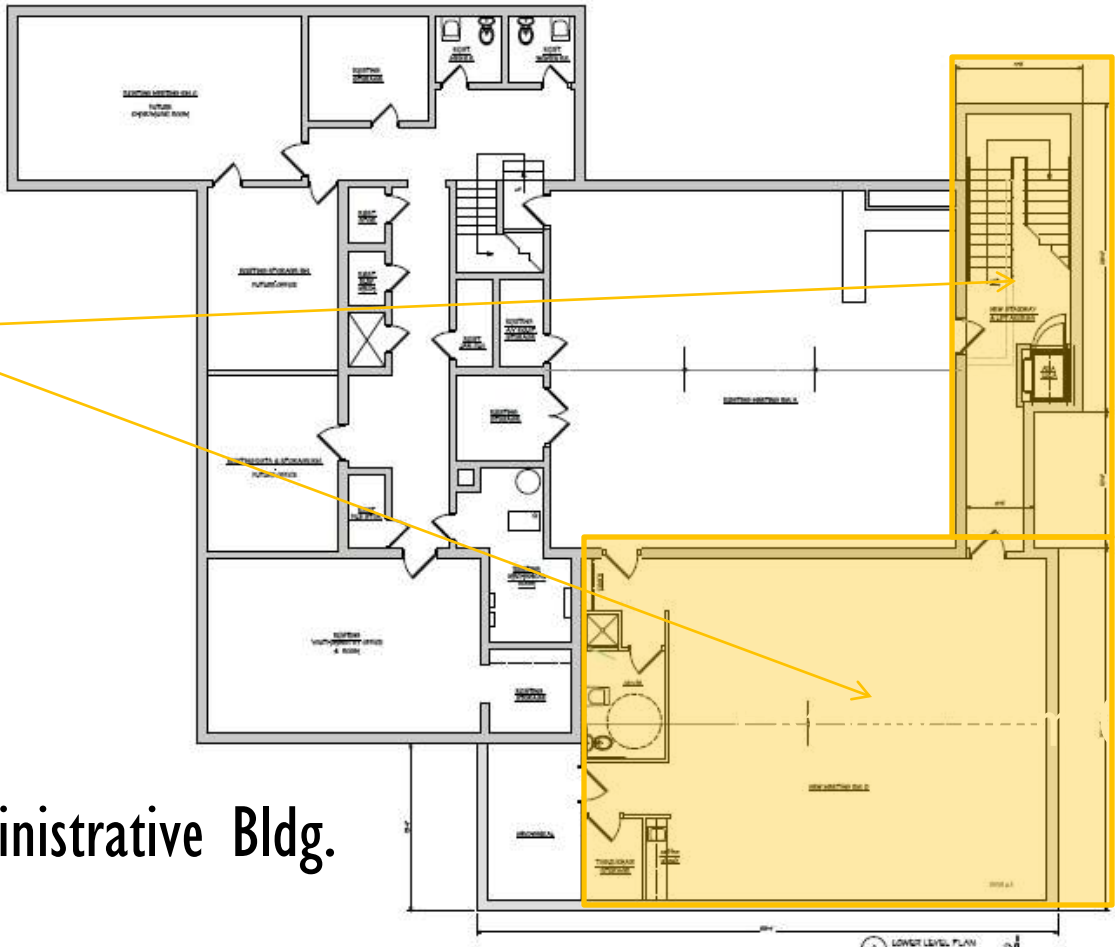
New Construction

Main Level Administrative Bldg.



# PARISH ADMINISTRATIVE OFFICES

New Construction



Lower Level Administrative Bldg.

PRELIMINARY STUDIES  
FOR OFFICE / RECTOR'S  
IMMACULATE CONCEPTION PARISH  
401 EAST NORTH BRADY  
COLUMBUS, OHIO

DATE: 02-18-17

0218

02-09-17





# PARISH EDUCATION CENTER ADDITION

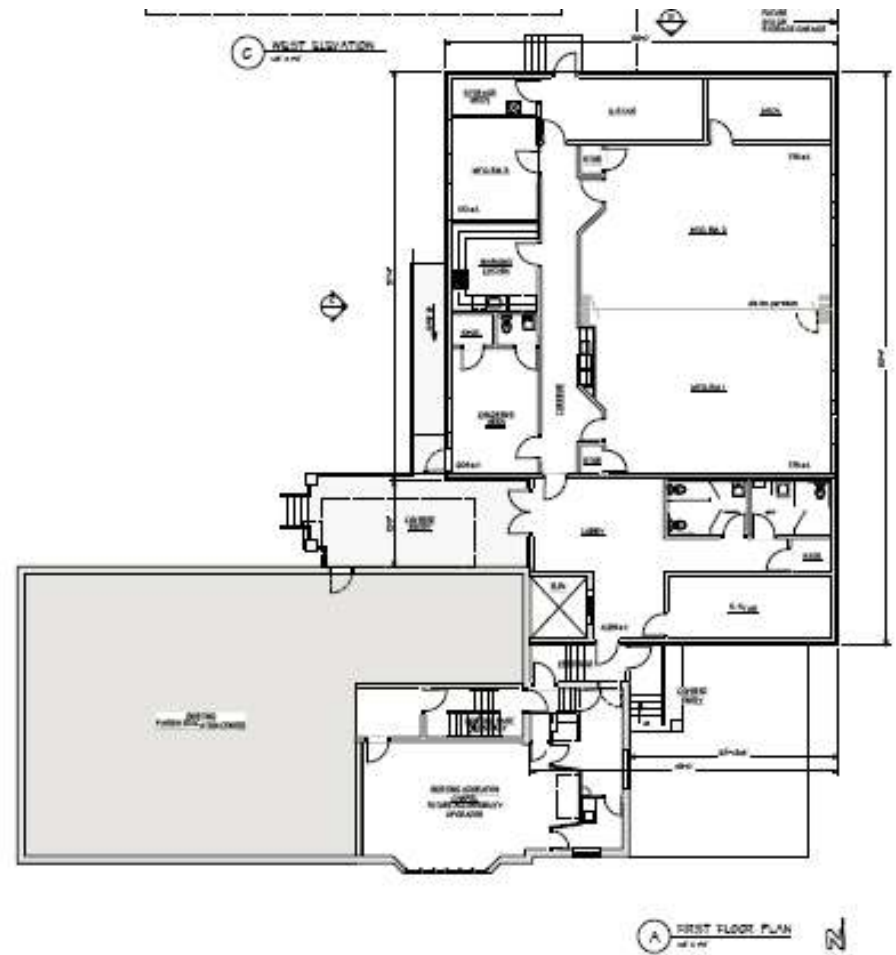
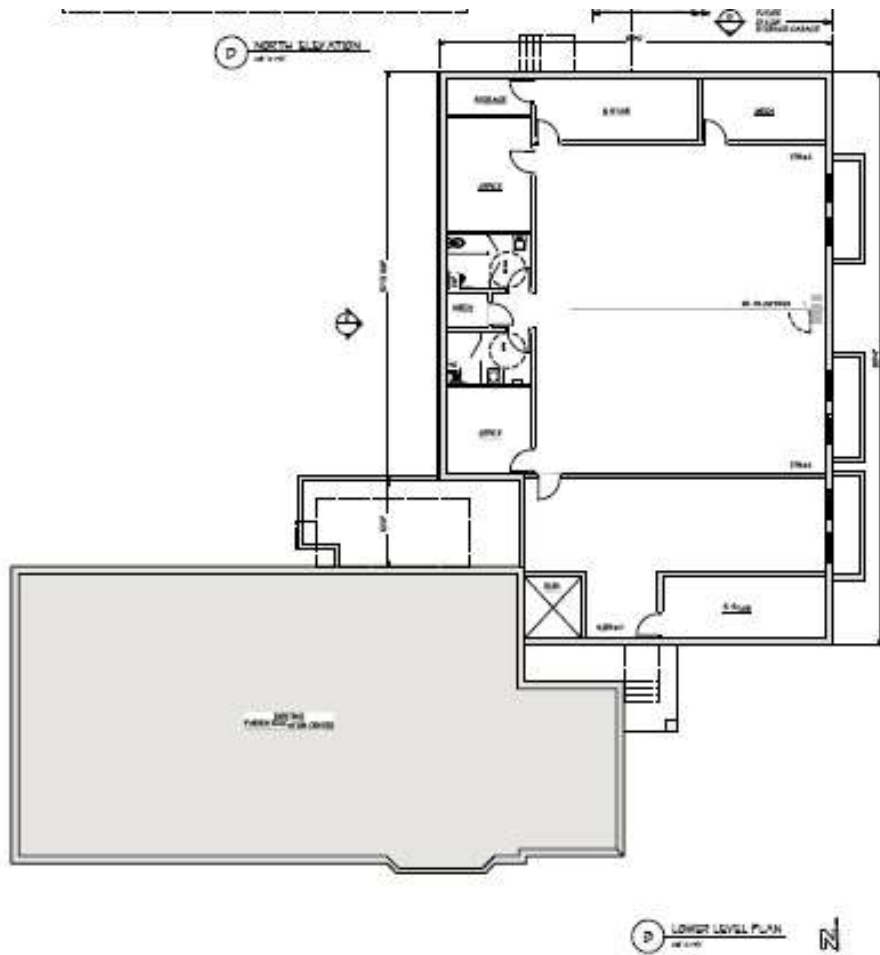
Our parish growth — in families, ministries, and more — has left us with a need for additional multi-purpose space for parish ministry and/or community meetings for children and adults. To address this need, an addition to the Adoration Chapel/Children's Center building is proposed. The building will:

- Provide direct access to the Adoration Chapel and existing Children's Center with a separate, secure, covered entry
- Feature two floors and allow for customizable space for small and large groups with dedicated restrooms

# PARISH EDUCATION CENTER ADDITION



# PARISH EDUCATION CENTER ADDITION



# PROJECTED COSTS

Project	Total SF	Projected Cost for Completion
Exterior Church Restoration	N/A	\$400,000
Interior Church Restoration and One-Color Paint	N/A	\$100,000
Production Kitchen/Cafeteria Addition and Existing School Space Updates	19,000 SF	\$4.48MM
Parish Administrative Office Addition and Renovations	5,780 SF	\$1MM
Parish Education Center Addition	8,500 SF	<u>\$1.416MM</u>
	<i>Total Projected Cost:</i>	<u>\$7.4MM</u>

# Q&A

Q: Why aren't we tearing down the old convent?

A: The structure is sound and can be utilized for meeting space while new construction is occurring.

Q: What happened to the idea of classrooms over the new kitchen/cafeteria addition?

A: That structure is designed to be built with the capability of including classrooms.

Q: What is being done to secure the preschool and Children's Center?

A: Electronic doors with codes will be implemented.

Q: Will there be changes to the Adoration Chapel? What about restrooms and handicap accessibility?

A: There will be a new, separate, secure entrance with dedicated restrooms and ADA accessibility.

Q: The playground is currently located where the Education Center addition is proposed. What will happen with it?

A: Only a small section of the current playground will be affected. We will relocate it near the other playset.

Q: How will the proposed new school entrance be used since there is very limited parking in that location?

A: The new entrance on E. North Broadway will be a covered entrance with enhanced visibility from E. North Broadway. The main school entrance will remain in its current location on the east side of the school.



# Q&A, continued

Q: Do we still own the Oakland Park house?

A: Yes, the use of that property is still to be determined; however, there are many possibilities, including clergy housing, parking, storage, an extended playground, etc.

Q: How will we inform the neighbors of our plans?

A: Renovation/building projects will be shared openly with the surrounding neighbors so their questions may be answered.

Q: Why are we considering such an expansive project when it seems school enrollment and Mass attendance seems to be reducing?

A: Our parish is still growing! Furthermore, we have initiated new programs and ministries (Walking with Purpose, That Man is You, Alpha, etc.) to encourage and develop a renewed devotion to faith and the Church. In addition, the preschool program is in place to draw families to our parish and school.

